



UNISTRUT®

Cush-A-Clamp®

***Cushioning
& Clamping
Products***



Manufactured
in the USA

The Original Metal Framing System

PRODUCT
FOCUS



UNISTRUT®



U-BOLT SERIES

U.S. PATENT NO. 4,934,635—4,997,148—5,014,9

Designed for the tough jobs, the U-BOLT SERIES secures pipe runs to any flat surface. Provides total load distribution, allowing the U-BOLT to become a full-contact hanger instead of a knife edge.

The Cushion —

A rugged performer molded of a thermoplastic elastomer, the cushion withstands the effects of most oils, chemicals and cleaning compounds, in temperatures from -50°F to 300°F. A Living Hinge allows the cushion to be spread apart for quick, easy installation.

The Clamp —

A steel U-BOLT (with electro-galvanized finish) traps and secures the cushion in place to prevent lateral movement, while nylon-insert nuts provide a positive lock.

About the Products

When installing fluid or gas conduction pipe, tube, or hose, the effects of vibration, shock, surge, temperature and unwanted noise are a major concern. Improperly clamped pipe, tube, or hose invite line failure and potential problems. New developments in cushioned clamping from Unistrut provide a proper clamping system to combat these effects, presently used in such industries as:

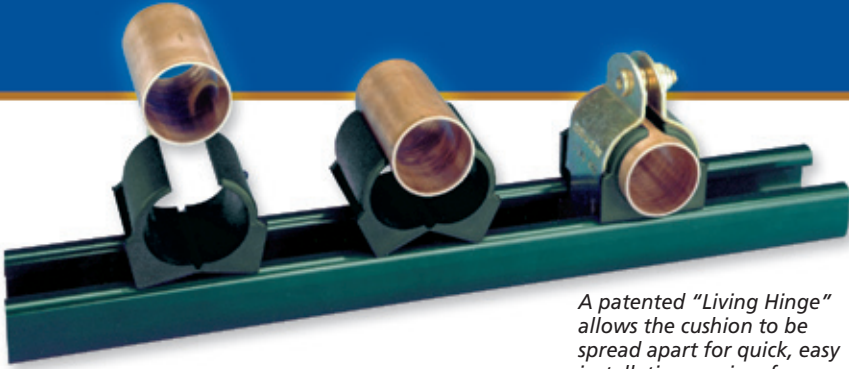
Refrigeration	Fluid Power	Machine Tool
Pulp and Paper	Power Plants	Marine
Agricultural	Robotics	Paint Systems
Communication	Instrumentation	Mining
Construction	Refineries	Food Processing

Cush-A-Clamp® is at home in the plant or in the field, in OEM design or retrofit and repair installations. When your design requires pipe, tube, or hose, let Unistrut offer a practical and proven method to battle the effects of vibration, shock, surge, electrolysis, abrasion, expansion and contraction.

**Vibration... Shock... Surge...
Expansion & Contraction...
Noise... Insulation**



Available in pipe sizes from 1/2" thru 12".
Also available in type 304 and 316 stainless steel.



A patented "Living Hinge" allows the cushion to be spread apart for quick, easy installation on sizes from 1/4" to 1 1/2".

CUSH-A-CLAMP®

U.S. PATENT NO. 4,934,635—4,997,148—5,014,940

Features a unique shoulder stud which is securely fastened to one clamp half. This "controlled-squeeze" design eliminates overtightening and rotation while a nylon-insert nut assures a positive lock. Clamps are available in steel (with electro-galvanized or electrochromate finish), and stainless steel.

Manufactured from a thermoplastic elastomer, it's built tough to withstand the effects of most oils, chemicals and industrial cleaning compounds, in temperatures from -50°F to 300°F. A patented "Living Hinge" allows the cushion to be spread apart for quick, easy installation. Interlock edges and channel locator legs assure that the cushion remains in place.



Wide Size Range —

Available in tube sizes from 1/4" to 6". Special sizes available.

Installation —

One person, one tool, one job done in a fraction of the time. Retrofitting can be added without disturbing your present system.



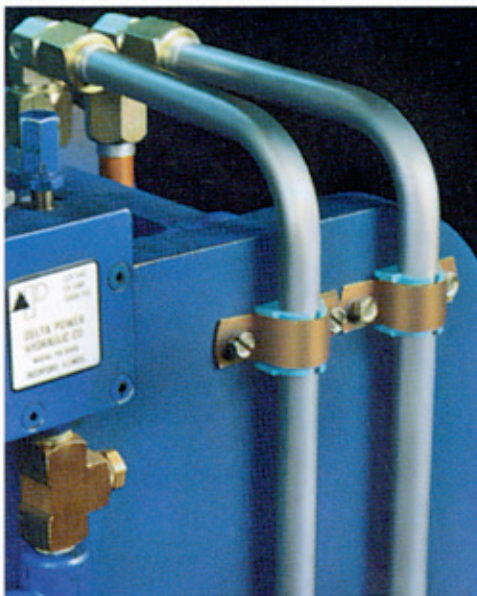
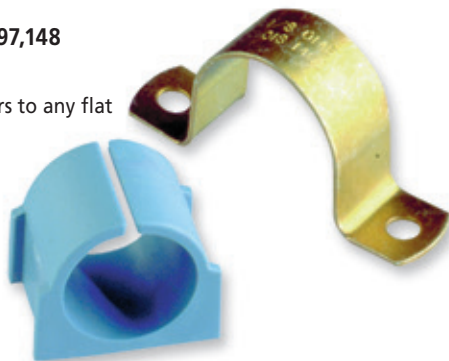
OMEGA SERIES

U.S. PATENT NO. 4,934,635-4,997,148

Attaches with two standard fasteners to any flat surface, machine frame, structural frame, masonry walls, etc. They go up fast, lines are rigid and look neat.

The Cushion —

Manufactured from a thermoplastic elastomer, it's built tough to withstand the effects of most oils, chemicals and industrial cleaning compounds, in temperatures from -50°F to 300°F.



The Clamp —

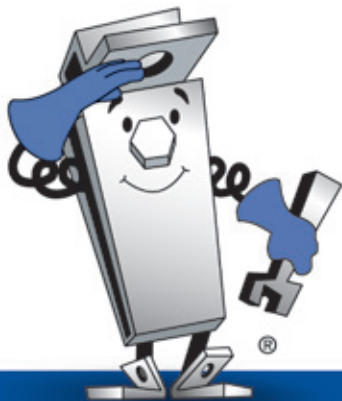
Available in steel (with electro-chromate finish), and stainless steel.

Wide Size Range —

Available in tube sizes from 1/4" to 2 1/8", pipe sizes from 1/4" to 2". Special sizes available—call Unistrut.

es from 1/4" to 6 1/8", pipe sizes from 1/4" to
able—call Unistrut.

gets
ction
s can
assem-
stem.



Ordering Information

Ordering Cush-A-Clamp, Omega and U-Bolt Series assemblies is fast and easy. Refer to the installation chart, select your specific application, then order the appropriate assembly part number.

CUSH-A-CLAMP®

All pipe series and tube series above 1 $\frac{3}{4}$ " are furnished without the controlled-squeeze shoulder bolt. These sizes feature a threaded stud securely fastened to one clamp half.

Tube O.D. is Cushion I.D. All parts are marked for easy identification and packaged for small lot or bulk use.

Part Numbers are "coded" to designate Tube or Pipe series, cushion size and clamp size.

EXAMPLE:

Tube Series-004T008

004 (Cushion Size $\frac{4}{16}$ "= $\frac{1}{4}$ ")

T (Tubing Assembly)

008 (Clamp Size $\frac{8}{16}$ "= $\frac{1}{2}$ ")

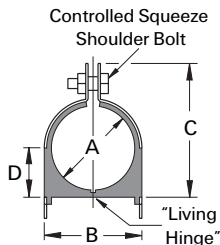
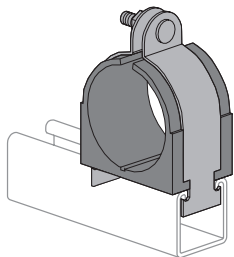
Pipe Series-009N012

009 (Cushion Size $\frac{9}{16}$ "= $\frac{3}{4}$ " Pipe)

N (Pipe Assembly)

012 (Clamp Size $\frac{12}{16}$ "= $\frac{3}{4}$ ")

CUSH-A-CLAMP®

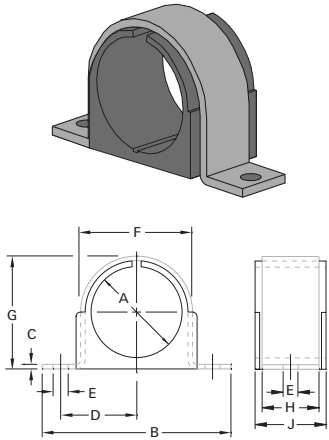


PIPE SERIES						
Part Number	Pipe Size Nom.(In)	Dimensions (Inches)				Wt/ 100 pcs Lbs
		A	B	C	D	
009N012	$\frac{1}{4}$	0.54	0.98	1.34	0.43	13
011N014	$\frac{3}{8}$	0.67	1.13	1.54	0.49	14
014N018	$\frac{1}{2}$	0.84	1.29	1.82	0.58	15
017N022	$\frac{3}{4}$	1.05	1.50	1.95	0.70	17
021N026	1	1.31	1.76	2.34	0.81	19
027N032	1 $\frac{1}{4}$	1.66	2.17	2.73	0.99	35
030N034	1 $\frac{1}{2}$	1.90	2.35	2.86	1.09	39
038N044	2	2.37	2.82	3.67	1.41	49
046N052	2 $\frac{1}{2}$	2.87	3.32	4.17	1.66	57
056N062	3	3.50	3.95	4.79	1.97	55
064N072	3 $\frac{1}{2}$	4.00	4.45	5.42	2.28	88
072N080	4	4.50	4.95	5.92	2.53	110
089N096	5	5.56	6.01	6.92	3.06	130
106N114	6	6.62	7.07	8.23	3.59	140

TUBE SERIES							
Part Number	Copper & Steel Tubing O.D. (In)	Copper Water Pipe Nom.(In)	Dimensions (Inches)				Wt/ 100 pcs Lbs
			A	B	C	D	
004T008	$\frac{1}{4}$		0.25	0.62	0.98	0.27	10
006T010	$\frac{3}{8}$	$\frac{1}{4}$	0.37	0.82	1.13	0.33	11
008T012	$\frac{1}{2}$	$\frac{3}{8}$	0.50	0.94	1.34	0.40	13
010T014	$\frac{5}{8}$	$\frac{1}{2}$	0.62	1.06	1.54	0.46	14
012T016	$\frac{3}{4}$	$\frac{5}{8}$	0.75	1.20	1.68	0.52	14
014T018	$\frac{7}{8}$	$\frac{3}{4}$	0.87	1.31	1.82	0.58	15
016T020	1		1.00	1.44	1.95	0.65	17
018T022	1 $\frac{1}{8}$	1	1.12	1.57	2.08	0.70	18
020T024	1 $\frac{1}{4}$		1.25	1.70	2.21	0.77	18
022T026	1 $\frac{3}{8}$	1 $\frac{1}{4}$	1.37	1.82	2.34	0.83	20
024N028	1 $\frac{1}{2}$		1.50	1.95	2.47	0.90	33
026N030	1 $\frac{5}{8}$	1 $\frac{1}{2}$	1.62	2.07	2.60	0.96	35
028N032	1 $\frac{3}{4}$		1.75	2.20	2.73	1.02	37
030N034	1 $\frac{7}{8}$		1.87	2.32	2.86	1.09	39
032N036	2		2.00	2.45	3.04	1.15	46
034N040	2 $\frac{1}{8}$		2.12	2.57	3.23	1.27	47
038N044	2 $\frac{3}{8}$		2.37	2.82	3.67	1.41	49
040N046	2 $\frac{1}{2}$		2.50	2.94	3.79	1.46	51
042N048	2 $\frac{5}{8}$		2.62	3.07	3.92	1.53	55
046N052	2 $\frac{7}{8}$		2.87	3.32	4.17	1.66	57
050N054	3		3.00	3.57	4.42	1.78	60
050N056	3 $\frac{1}{8}$		3.12	3.57	4.42	1.78	60
053N060	3 $\frac{3}{16}$		3.31	3.96	4.75	1.90	62
056N062	3 $\frac{1}{2}$		3.50	3.95	4.79	1.97	55
058N064	3 $\frac{3}{8}$		3.62	4.20	4.99	2.03	70
064N072	4		4.00	4.45	5.42	2.28	88
066N074	4 $\frac{1}{8}$		4.12	4.57	5.54	2.34	94
069N076	4 $\frac{3}{16}$		4.34	4.96	5.84	2.40	100
072N080	4 $\frac{1}{2}$		4.50	4.95	5.92	2.53	110
082N090	5 $\frac{1}{8}$		5.12	5.57	6.54	2.84	125
098N106	6 $\frac{1}{8}$		6.12	6.57	7.54	3.34	130

UNISTRUT®

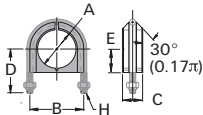
OMEGA SERIES



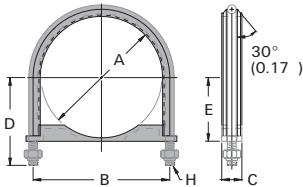
Part Number	Copper & Steel Tubing O.D.(in)	Copper Water Pipe Nom.(In)	Pipe Size Nom.(In)	Dimensions (Inches)									Wt/ 100 pcs Lbs
				A	B	C	D	E	F	G	H	J	
004M007	1/4			0.25	1.81	0.06	0.60	0.20	0.53	0.48	0.62	0.78	3.4
006M008	3/8	1/4		0.37	1.90	0.06	0.65	0.20	0.62	0.62	0.62	0.81	4.0
008M011	1/2	3/8	1/4	0.50	2.20	0.06	0.80	0.26	0.82	0.75	0.75	0.98	5.5
010M013	5/8	1/2	3/8	0.62	2.32	0.06	0.86	0.26	0.94	0.87	0.75	0.98	6.0
012M015	3/4	5/8		0.75	2.41	0.06	0.90	0.26	1.03	1.01	0.75	0.98	6.5
014M017	7/8	3/4	1/2	0.87	2.56	0.06	0.98	0.26	1.18	1.03	0.75	0.98	7.1
016M019	1			1.00	2.68	0.06	1.04	0.26	1.31	1.25	0.75	0.98	7.8
018M020			3/4	1.05	2.68	0.06	1.04	0.26	1.31	1.25	0.75	0.98	8.1
018M021	1 1/8	1		1.12	2.82	0.06	1.11	0.26	1.44	1.33	0.75	0.98	8.4
020M024	1 1/4			1.25	3.00	0.08	1.20	0.26	1.65	1.47	1.25	1.56	17
021M026			1	1.31	3.12	0.08	1.26	0.26	1.76	1.71	1.25	1.56	20
022M026	1 3/8	1 1/4		1.37	3.12	0.08	1.26	0.26	1.76	1.71	1.25	1.56	19
024M028	1 1/2			1.50	3.65	0.08	1.42	0.26	1.93	1.88	1.25	1.56	20
026M030	1 5/8	1 1/2		1.62	3.77	0.08	1.48	0.26	2.07	2.00	1.25	1.56	23
027M032			1 1/4	1.66	3.90	0.10	1.55	0.33	2.21	2.12	1.25	1.56	32
028M032	1 3/4			1.75	3.90	0.10	1.55	0.33	2.21	2.12	1.25	1.56	32
030M034	1 7/8		1 1/2	1.87	4.02	0.10	1.61	0.33	2.33	2.25	1.25	1.56	34
032M036	2			2.00	4.15	0.10	1.67	0.33	2.46	2.38	1.25	1.56	36
034M040	2 1/8			2.12	4.40	0.10	1.80	0.33	2.71	2.62	1.25	1.56	41
038M044			2	2.37	4.71	0.10	1.94	0.33	2.96	2.88	1.25	1.56	44
082M090	5 1/8			5.12	7.64	0.10	3.41	0.40	5.83	6.75	1.25	1.56	120

U-BOLT SERIES

1/2" to 6"



8" to 12"



Part Number	Pipe Size Nom.(in)	Dimensions (Inches)							Wt/ 100 pcs Lbs
		A	B	C	D	E	F	H	
UB1/2PA	1/2	0.84	1.60	0.68	1.5	0.67	1/4	1/4-20 UNC-2B	9
UB3/4PA	3/4	1.05	1.80	0.68	1.6	0.78	1/4	1/4-20 UNC-2B	10
UB1PA	1	1.31	2.05	0.68	1.7	0.91	1/4	1/4-20 UNC-2B	12
UB1 1/4PA	1 1/4	1.66	2.54	1.24	2.1	1.08	3/8	3/8-16 UNC-2B	36
UB1 1/2PA	1 1/2	1.90	2.78	1.24	2.2	1.19	3/8	3/8-16 UNC-2B	32
UB2PA	2	2.37	3.32	1.24	2.5	1.45	3/8	3/8-16 UNC-2B	42
UB2 1/2PA	2 1/2	2.87	3.88	1.24	3.0	1.69	1/2	1/2-13 UNC-2B	72
UB3PA	3	3.50	4.50	1.24	3.3	2.00	1/2	1/2-13 UNC-2B	84
UB3 1/2PA	3 1/2	4.00	5.00	1.24	3.7	2.25	1/2	1/2-13 UNC-2B	93
UB4PA	4	4.50	5.50	1.24	3.9	2.5	1/2	1/2-13 UNC-2B	102
UB5PA	5	5.56	6.59	1.24	4.5	3.03	1/2	1/2-13 UNC-2B	123
UB6PA	6	6.62	7.81	1.44	5.4	3.56	5/8	5/8-11 UNC-2B	123
UB8PA	8	8.62	9.84	1.44	6.4	4.56	5/8	5/8-11 UNC-2B	243
UB10PA	10	10.75	12.25	1.65	7.7	5.68	3/4	3/4-10 UNC-2B	492
UB12PA	12	12.75	14.25	1.65	8.7	6.68	3/4	3/4-10 UNC-2B	563

For the complete Unistrut product line, consult our website...

4205 Elizabeth
Wayne, MI 48184
Phone: 800-521-7730
Fax: 734-721-4106

www.unistrut.com

tyco / Electrical & Metal Products