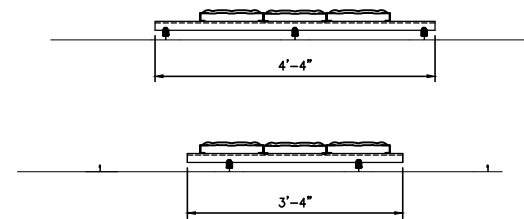


UNISTRUT PARALLEL 10'-0" WALKWAY PLAN W/ NO RAILS
PART NO. GSWNG-03610-S
PART NO. GSWNP-03610-A
PART NO. GSANG-03610-S
PART NO. GSANP-03610-A
 SCALE: 3/4"=1'-0"



SECTION
 SCALE: 3/4"=1'-0" **B**
 S1.0

COMMON FINISHES ARE PRE-GALVANIZED (PG) AND PERMA GREEN. OTHER MATERIAL AND FINISHES ARE AVAILABLE, CONTACT UNISTRUT SERVICE COMPANY FOR MORE INFORMATION

THE STANDARD DETAIL IS FOR REFERENCE ONLY, AND IS NOT CONSIDERED TO BE AN ENGINEERED SYSTEM UNLESS PURCHASED THROUGH UNISTRUT SERVICE COMPANY 24400 SPERRY DR. WESTLAKE, OHIO 44145. STANDARD DETAILS ARE FOR DESIGN INTENT ONLY. ACTUAL CONDITIONS, INCLUDING BUT NOT LIMITED TO LOADS, ELEVATIONS, OVERALL SIZE, SPACING BUILDING STRUCTURE, FIELD CONDITIONS, MEP INTERFERENCES, ETC CAN AND WILL VARY. CONTACT UNISTRUT SERVICE COMPANY AT 440-348-9450, OR WWW.UNISTRUTOHIO.COM FOR A SITE SPECIFIC QUOTE.

NOT FOR
 CONSTRUCTION

Unistrut Service Company
 24400 Sperry Drive
 Cleveland, OH 44145
 Phone: 440-348-9450
 1-800-621-2508
 Fax: 440-348-9455
 E-Mail: info@UnistrutOhio.com

CLIENT:
UNISTRUT SERVICE COMPANY
 PROJECT DESCRIPTION:
USC
WESTLAKE, OHIO

DRAWING TITLE:
STANDARD NO RAIL ROOF WALK PLAN
 PROJECT NO. 7001
 DWG NO. -S1.0
 REV. 0
 SCALE: AS NOTED
 SHEET 1 OF 1

REV. NO.	DATE	REV. DESCRIPTION	DESIGN BY	DATE
0	X		D.TURK	3/7/2017
			CHECKED BY	DATE
			OTHER	DATE