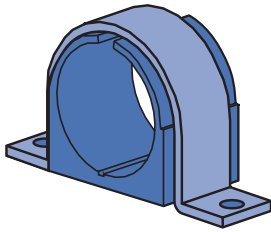


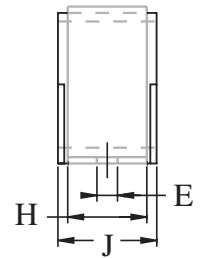
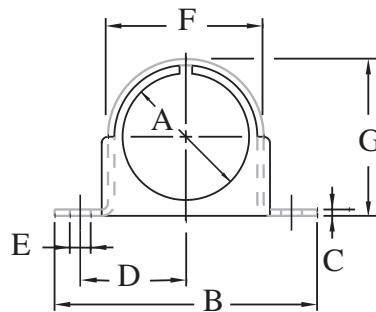


004M007 THRU 034M040

CUSH-A-CLAMP® ASSEMBLY OMEGA SERIES™



Includes clamp and cushion.
Materials: Clamp: ZD or stainless steel.
Cushion: Thermoplastic elastomer.



Note: Cannot be mounted on the slotted side of metal framing channel.
Can be mounted to any flat surface.

MATERIAL

Unistrut pipe clamps, unless noted, are punch-press made from hot-rolled, pickled and oiled steel plates, strip or coil, and conform to ASTM specifications A1008, A575, A576, A635, or A36. The fitting steel also meets the physical requirements of ASTM A1011 SS GR 33. The pickling of the steel produces a smooth surface free from scale.

Many items are also available in stainless steel.

Consult factory for ordering information.

FINISHES

Pipe supports are available in:

- Electro-galvanized (EG), conforming to ASTM B633 Type III SC1
- Hot-dipped galvanized (HG), conforming to ASTM A123 or A153 (hardware)
- Perma-Green III (GR), and plain (PL).

Project: _____	Approval Stamp:
Architect / Engineer: _____	
Date: _____ Phone: _____	
Contractor: _____	
Address: _____	
Notes 1: _____	
Notes 2: _____	