



Snap-A-Saddle Pro™

Permanent Solutions to Insulation Problems



Plumbing | Mechanical | Refrigeration | HVAC

Call ZSi-Foster at (800) 323-7053 or order now at zsi-foster.com

ZSi-Foster

Springfield, MO | Canton, MI | La Mirada, CA



Snap-A-Saddle Pro™

Insulated Pipe Saddle for Mounting on Strut

Its revolutionary design allows for pipe movement within the support, eliminating common problems related to traditional pipe saddles: rotation, displacement and thermal insulation damages.



Breakthrough Innovation

Snap-a-Saddle Pro™ is designed to accommodate movement of the pipes generated by thermal expansion and vibration. With its unique sliding design at each end, Snap-a-Saddle Pro easily and effectively cradles and protects pipes allowing them to expand and vibrate without damaging their insulation.

Snap-a-Saddle Pro permanently eliminates insulation tears, refrigerant leaks, condensing & freezing. It holds up to the highest quality standards of the industry.

Setting the Standard

Made of high quality, ultra-resistant polypropylene, Snap-a-Saddle Pro™ is today's most practical and economical solution to standardize pipe installations, improve appearance, and completely eliminate premature insulation tears, costly leaks, and loss of refrigerated merchandise caused by inadequate suspension systems.

Fastest Installation In The Industry

60% faster than metal or plastic shields
80% faster than clamps and collars

Keeps Thermal Bridge Intact

Eliminates insulation compression

Tool-Free Installation

One simple click is all it takes

Maintains Pipe Insulation Properties

Eliminates displacement and/or failing of pipe support, leading to refrigerant leaks

Maintains Liquid Line In Place

Eliminates refrigerant leaks



WARNING: These products can expose you to chemicals including lead, which is known to the State of California to cause cancer, and which is known to cause birth defects or other reproductive harm. For more information go to www.P65Warnings.ca.gov.

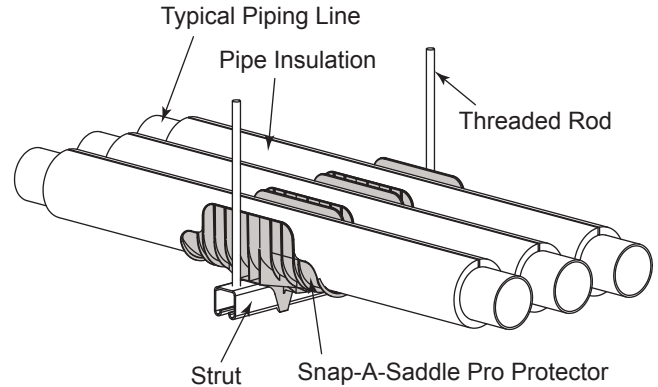
Snap-A-Saddle Pro™



Insulated Pipe Saddle for Mounting on Strut

SNAP-A-SADDLE PRO

Insulated Pipe Saddle for Mounting on Strut



Applications:

Refrigeration, Air Conditioning and Plumbing

Installation:

Tool-Free, "Clips" directly on standard 1-5/8" x 1-5/8" (41mm x 41mm) strut channel.

Suited for horizontal pipe installation.

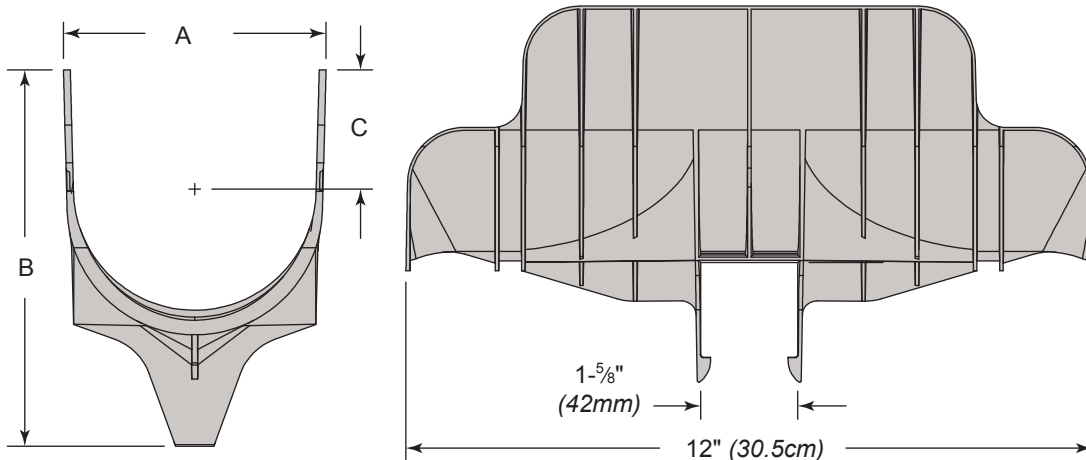
Certification:

UL classified for USA (UL-723 (ASTM E 84)) and ULC listed for Canada (ULC-S102.2).

Material:

Polypropylene copolymer

- UV resistant
- Operating temperature -40° to 178°F (-40° to 81°C)
- Paintable (preserves mechanical properties even after painting)
- Non-adhesive surface for linear expansion of thermal insulation. SAS825B & SAS825W have 20% glass filled material for additional strength

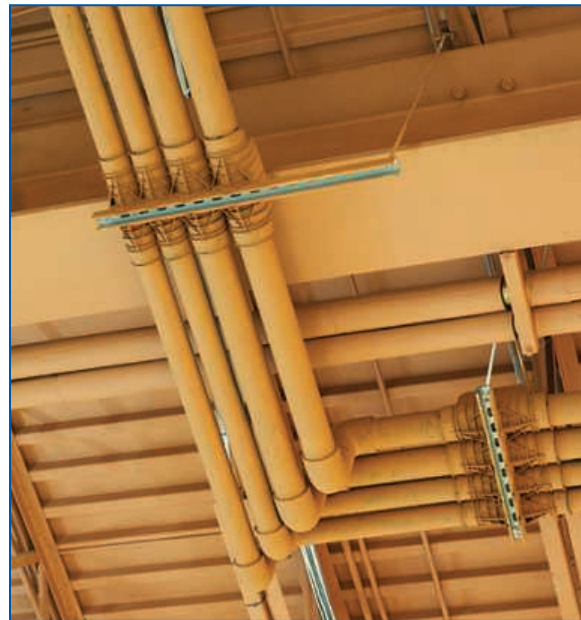


Part Number		A	B	C	D Length	E	Weight Each (Lbs)	Box Quantity
Black	White							
SAS225B	SAS225W	2.25 (57mm)	4.56" (116mm)	1.09" (28mm)	12" (30.5cm)	1-5/8" (42mm)	0.24 (0.11kg)	65
SAS325B	SAS325W	3.25 (82mm)	5.57" (140mm)	1.59" (40mm)			0.32 (0.14kg)	38
SAS425B	SAS425W	4.25 (108mm)	6.59" (167mm)	2.09" (53mm)			0.43 (0.19kg)	25
SAS525B	SAS525W	5.25 (133mm)	7.57" (192mm)	2.58" (66mm)			0.50 (0.23kg)	16
SAS625B	SAS625W	6.25 (159mm)	8.57" (218mm)	3.09" (78mm)			0.61 (0.28kg)	12
SAS825B	SAS825W	8.25 (204mm)	11.04" (280mm)	4.27" (108mm)			1.02 (0.46kg)	4



WARNING: These products can expose you to chemicals including lead, which is known to the State of California to cause cancer, and which is known to cause birth defects or other reproductive harm. For more information go to www.P65Warnings.ca.gov.

Insulated Pipe Saddle for Mounting on Strut



Copper Tube Size	Insulation Thickness				
	½" (13mm)	¾" (19mm)	1" (25mm)	1½" (38mm)	2" (50mm)
¼" (6.4 mm)	SAS225	SAS225	SAS325	SAS425	SAS525
⅜" (9.5 mm)					
½" (13 mm)					
⅝" (16 mm)					
¾" (19 mm)					
7⁄8" (22 mm)	SAS325	SAS325	SAS425	SAS525	SAS625
1-⅛" (28.5 mm)					
1-⅜" (35 mm)					
1-⅝" (41 mm)	SAS425	SAS425	SAS525	SAS625	SAS825
2-⅛" (54 mm)					
2-⅝" (67 mm)	SAS525	SAS525	SAS625	SAS825	-
4-⅛" (105 mm)					
5-⅛" (130 mm)		SAS825	SAS825		

Schedule 40/80 Pipe Size	Insulation Thickness				
	½" (13mm)	¾" (19mm)	1" (25mm)	1½" (38mm)	2" (50mm)
¼" (6.4 mm)	SAS225	SAS225	SAS325	SAS425	SAS525
⅜" (9.5 mm)					
½" (13 mm)					
¾" (19 mm)					
1" (25 mm)	SAS325	SAS325			
1-¼" (31 mm)			SAS425	SAS525	SAS625
1-½" (38 mm)					
2" (50 mm)	SAS425	SAS425			
2-½" (63 mm)			SAS525	SAS625	
3" (75 mm)	SAS525		SAS625	SAS825	SAS825
3-½" (88 mm)		SAS625			
4" (100 mm)	SAS625		SAS825		
5" (127 mm)	SAS825	SAS825			
6" (152 mm)			-	-	-



WARNING: These products can expose you to chemicals including lead, which is known to the State of California to cause cancer, and which is known to cause birth defects or other reproductive harm. For more information go to www.P65Warnings.ca.gov.

Snap-A-Saddle Pro Multi™

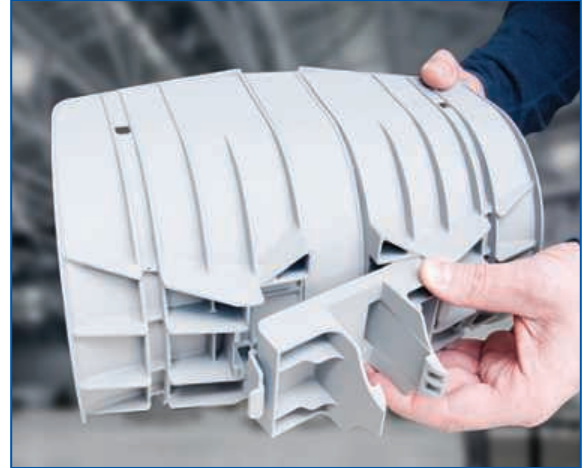
Adaptable Insulated Pipe Saddle



Snap-A-Saddle Pro Multi™ Adapts To Your Needs!

Allows use on various sizes of strut, H-Beam, floor-mount, Clevis and steel angle mountings

Adapts to different suspension systems, simply by swapping clipping adapters.



Breakthrough Innovation

Piping installations require different types of suspension systems, which vary in size. This new design adapts to various sizes of struts, H-Beam, floor-mount, Clevis hangers & Steel angles. Thanks to the interchangeable bottom adapters, Snap-a-Saddle Pro Multi™ eliminates the hassle & headaches of compatibility problems you've been dealing with for so long!

Standardize Your Installation

Snap-a-Saddle Pro Multi™ makes the installer's job easier while standardizing piping installations and improving appearance. Whether you are looking at new or existing installations, the Snap-a-Saddle Pro Multi™ clip-on adapters will adapt to both the suspension system and the selected size of saddle core.

One Part Suits Multiple Uses

Simply change adapters

Fastest Installation In The Industry

40% faster than metal or plastic shields

80% faster than clamps and collars

Keeps Thermal Bridge Intact

Prevents insulation damage and compression

Tool-Free Installation

One simple click is all it takes

Maintains Pipe Insulation Properties

Permanent solution to displacement and/or falling of pipe support

Maintains Liquid Line In Place

Eliminates refrigerant leaks



WARNING: These products can expose you to chemicals including lead, which is known to the State of California to cause cancer, and which is known to cause birth defects or other reproductive harm. For more information go to www.P65Warnings.ca.gov.

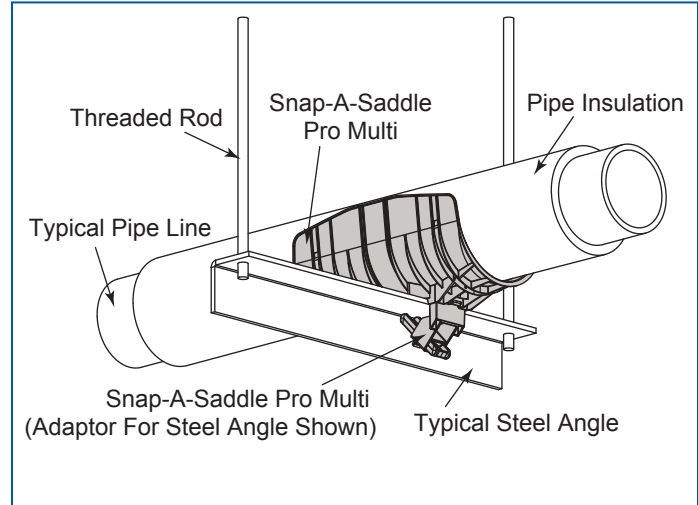


Snap-A-Saddle Pro Multi™

Adaptable Insulated Pipe Saddle

SNAP-A-SADDLE PRO MULTI

Adaptable Insulated Pipe Saddle



Applications:

Plumbing, Mechanical, Refrigeration, and Air Conditioning

Installation:

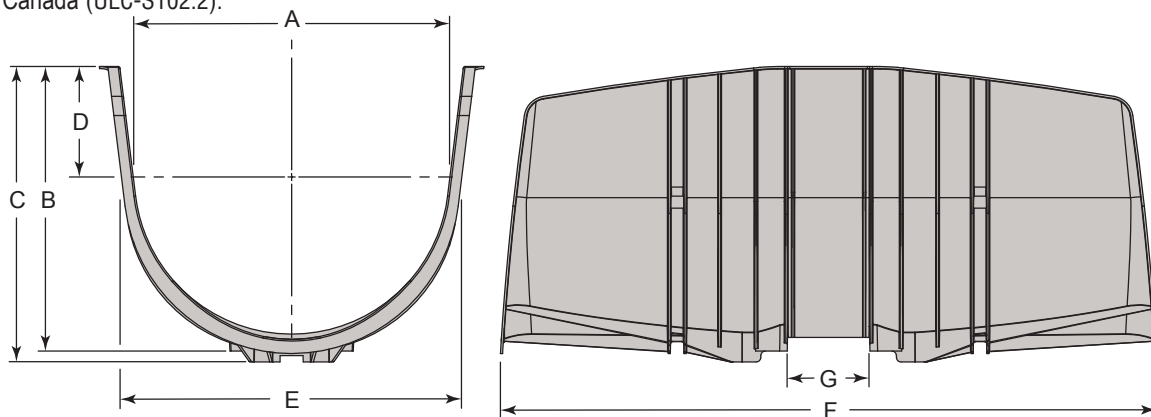
Tool-Free, suited for horizontal pipe installation.

Certification:

UL classified for USA (UL-723 (ASTM E 84)) and ULC listed for Canada (ULC-S102.2).

Material:

- Polypropylene 20% glass filled
- UV resistant
- Operating temperature -40° to 178°F (-40° to 81°C)
- Paintable (preserves mechanical properties even after painting)
- Non-adhesive surface for linear expansion of thermal insulation.



Part Number Grey	A	B	C	D	E	F Length	G	Weight Each (Lbs)	Box Quantity
SASM250G	2.34" (60mm)	1.92" (49mm)	2.33" (59mm)	0.40" (10mm)	2.45" (62mm)	12" (305mm)	1.20" (30mm)	0.20 (0.09kg)	126
SASM350G	3.45" (88mm)	3.17" (81mm)	3.58" (91mm)	1.09" (28mm)	3.56" (90mm)		1.48" (38mm)	0.29 (0.13kg)	86
SASM450G	4.50" (114mm)	3.89" (99mm)	4.19" (106mm)	1.17" (30mm)	4.61" (117mm)		1.75" (44mm)	0.43 (0.19kg)	48
SASM550G	5.56" (140mm)	4.90" (124mm)	5.20" (132mm)	1.66" (42mm)	5.75" (146mm)		1.78" (45mm)	0.47 (0.21kg)	36
SASM650G	6.46" (165mm)	5.96" (151mm)	6.26" (159mm)	2.18" (55mm)	6.75" (171mm)	18" (457mm)	2.08" (53mm)	0.54 (0.25kg)	34
SASM850G	8.65" (219mm)	7.83" (199mm)	8.13" (207mm)	3.04" (77mm)	8.75" (222mm)		2.26" (57mm)	1.04 (0.47kg)	10
SASM1050G	10.65" (271mm)	7.80" (198mm)	8.10" (206mm)	1.76" (45mm)	10.59" (269mm)			1.61 (0.73kg)	8
SASM1250G	12.65" (321mm)	9.18" (233mm)	9.48" (241mm)	2.14" (54mm)	12.52" (318mm)	23" (584mm)		1.90 (0.86kg)	7

The use of the Stabilizer Adapter with 10" SASM1050G and 12" SASM1250G Saddles is suggested for additional support.



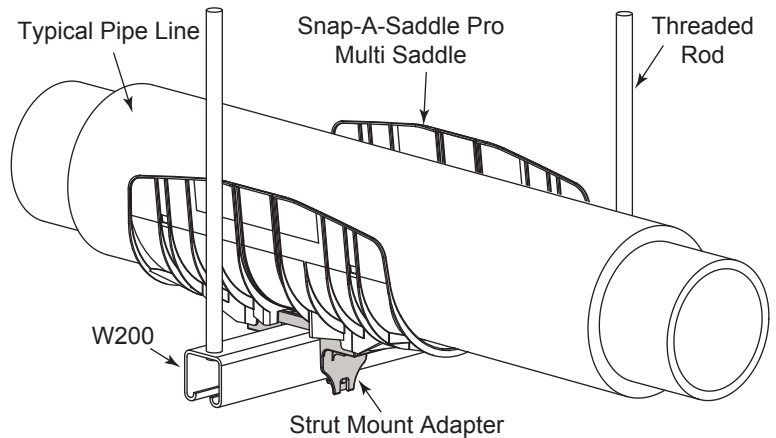
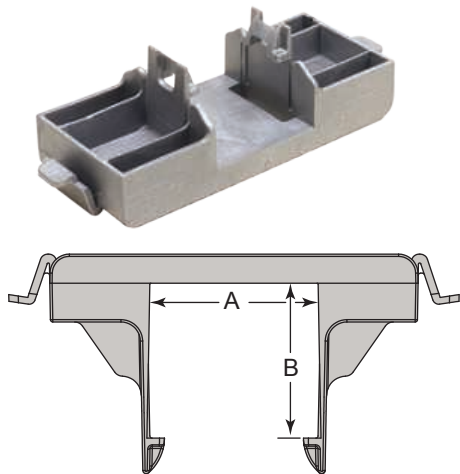
WARNING: These products can expose you to chemicals including lead, which is known to the State of California to cause cancer, and which is known to cause birth defects or other reproductive harm. For more information go to www.P65Warnings.ca.gov.

Snap-A-Saddle Pro Multi™ - Adapters



Adaptable Insulated Pipe Saddle

STRUT MOUNT ADAPTER



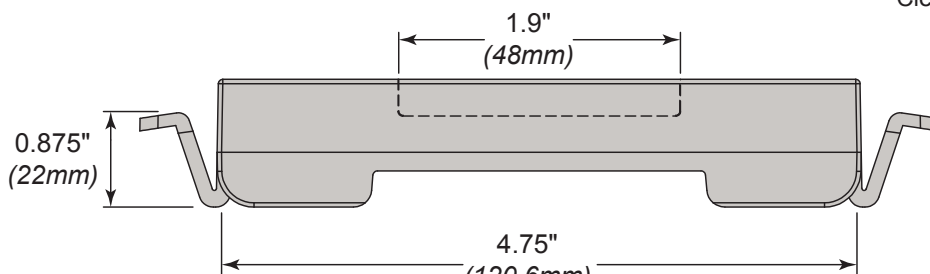
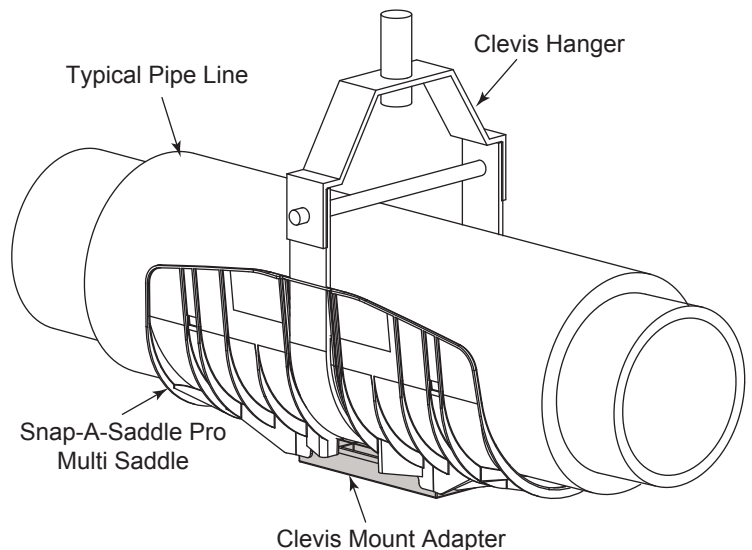
Part Number	A	B	Use with Wesanco Channel	Weight Each (Lbs)	Box Quantity
SASM30X30G	1- ³ / ₁₆ " (30mm)	1- ³ / ₁₆ " (30mm)	—	0.09 (0.04kg)	250
SASM31X43G	1- ⁵ / ₆₄ " (31mm)	1- ¹¹ / ₁₆ " (43mm)	—	0.10 (0.04kg)	
SASM40X38G	1- ⁹ / ₁₆ " (40mm)	1- ¹ / ₂ " (38mm)	-	0.11 (0.05kg)	
SASM42X20G	1- ⁵ / ₈ " (41mm)	¹³ / ₁₆ " (21mm)	W400, W500	0.09 (0.04kg)	
SASM42X42G		1- ⁵ / ₈ " (41mm)	W200, W210, W401, W501	0.10 (0.05kg)	
SASM4D21G	2- ¹ / ₈ " (54mm)	1- ¹ / ₁₆ " (27mm)	-	0.12 (0.05kg)	
SASM4D22G		2- ¹ / ₈ " (54mm)	-		

The use of the Stabilizer Adapter with 10" SASM1050G and 12" SASM1250G Saddles is suggested for additional support.

STEEL ANGLE MOUNT ADAPTER



Part Number	Weight Each (Lbs)	Box Quantity
SASMCLEVISG	0.08 (0.04kg)	200



SnapShock™ can be attached to Clevis Mount Adapter.

Stabilizer can be attached with Clevis Mount Adapter

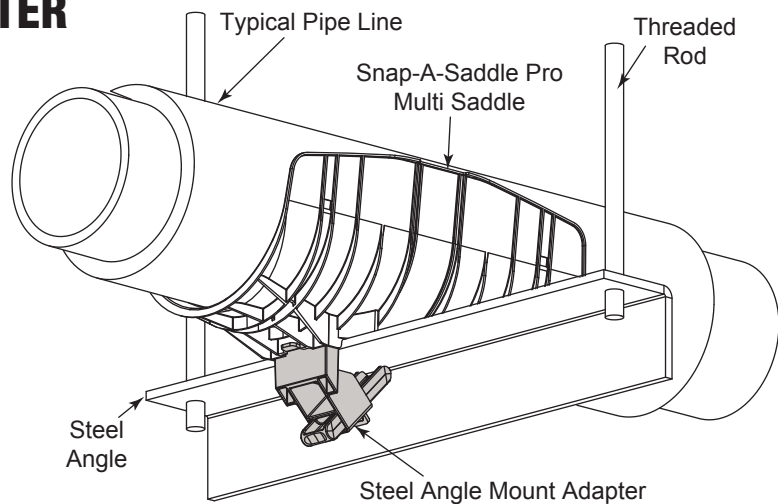
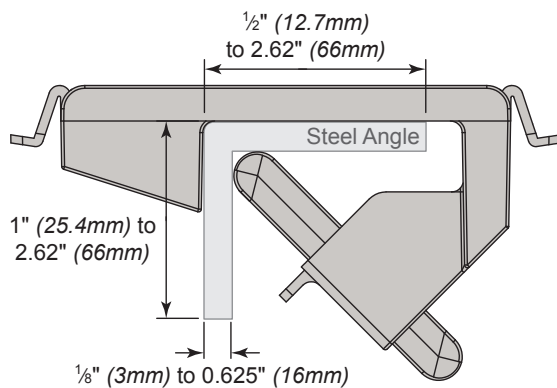
Clevis Mount Adapter is utilized with Floor Adapter assembly.

WARNING: These products can expose you to chemicals including lead, which is known to the State of California to cause cancer, and which is known to cause birth defects or other reproductive harm. For more information go to www.P65Warnings.ca.gov.

Snap-A-Saddle Pro Multi™ - Adapters

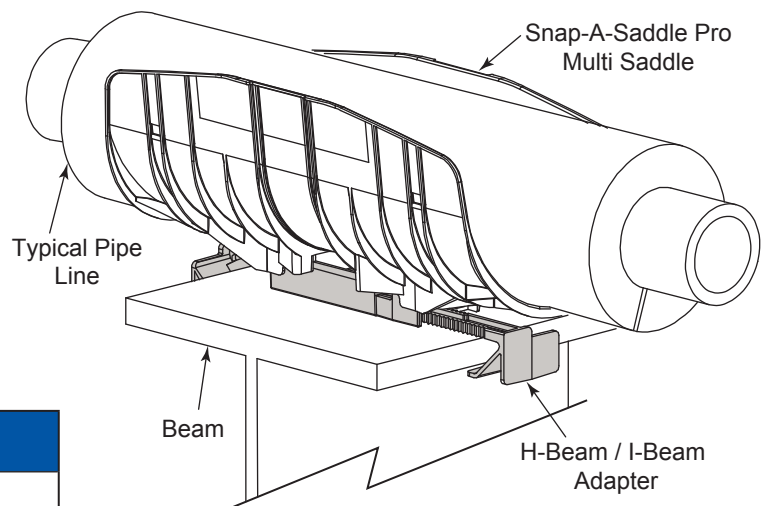
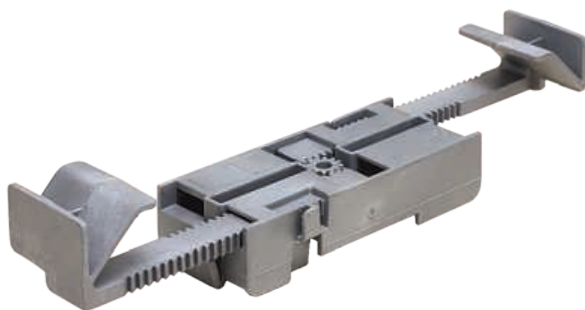
Adaptable Insulated Pipe Saddle

CLEVIS U-STRAP MOUNT ADAPTER

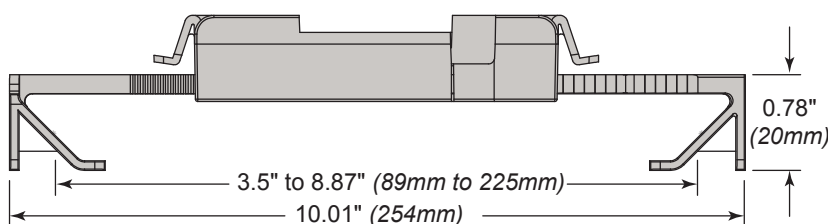


Part Number	Weight Each (Lbs)	Box Quantity
SASM2-5/8G	0.19 (0.09kg)	180

STRUT STABILIZER



Part Number	Weight Each (Lbs)	Box Quantity
SASMHBAMG	0.23 (0.10kg)	200



The use of the Stabilizer Adapter with 10" SASM1050G and 12" SASM1250G Saddles is suggested for additional support.



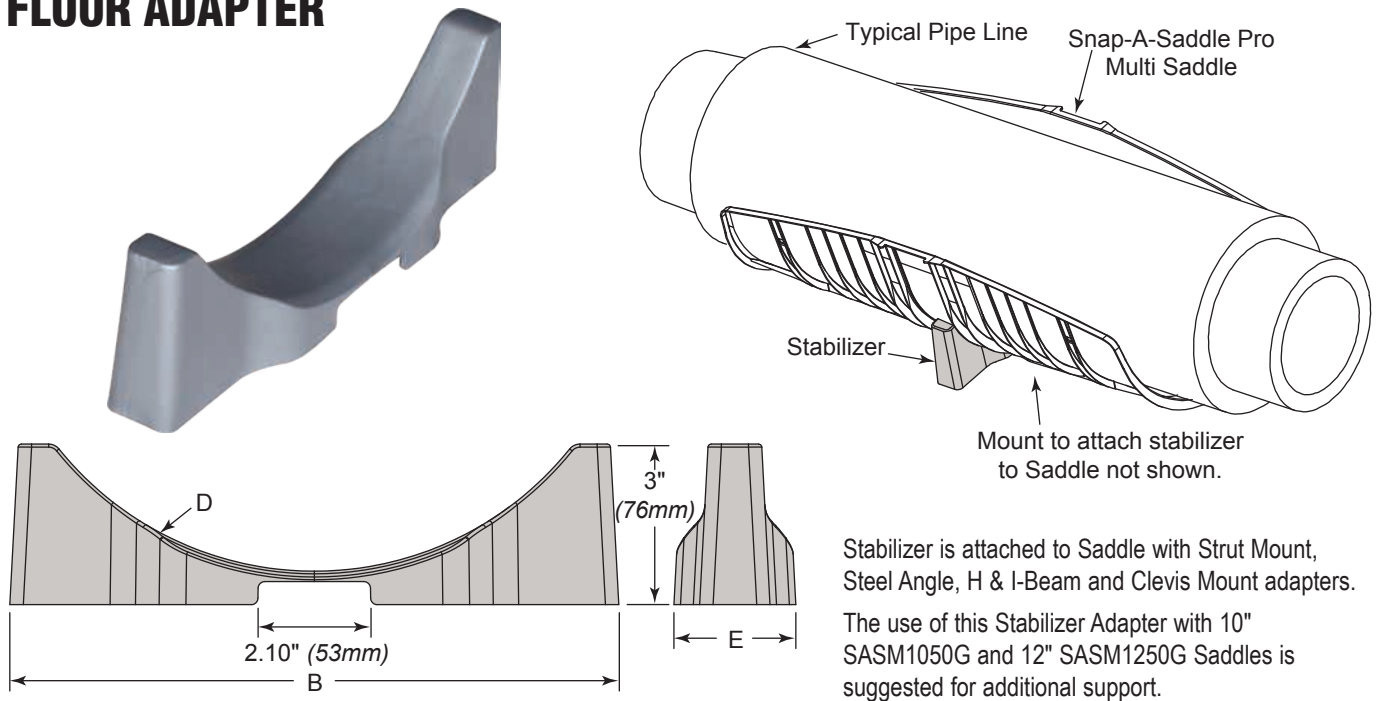
WARNING: These products can expose you to chemicals including lead, which is known to the State of California to cause cancer, and which is known to cause birth defects or other reproductive harm. For more information go to www.P65Warnings.ca.gov.

Snap-A-Saddle Pro Multi™ - Adapters



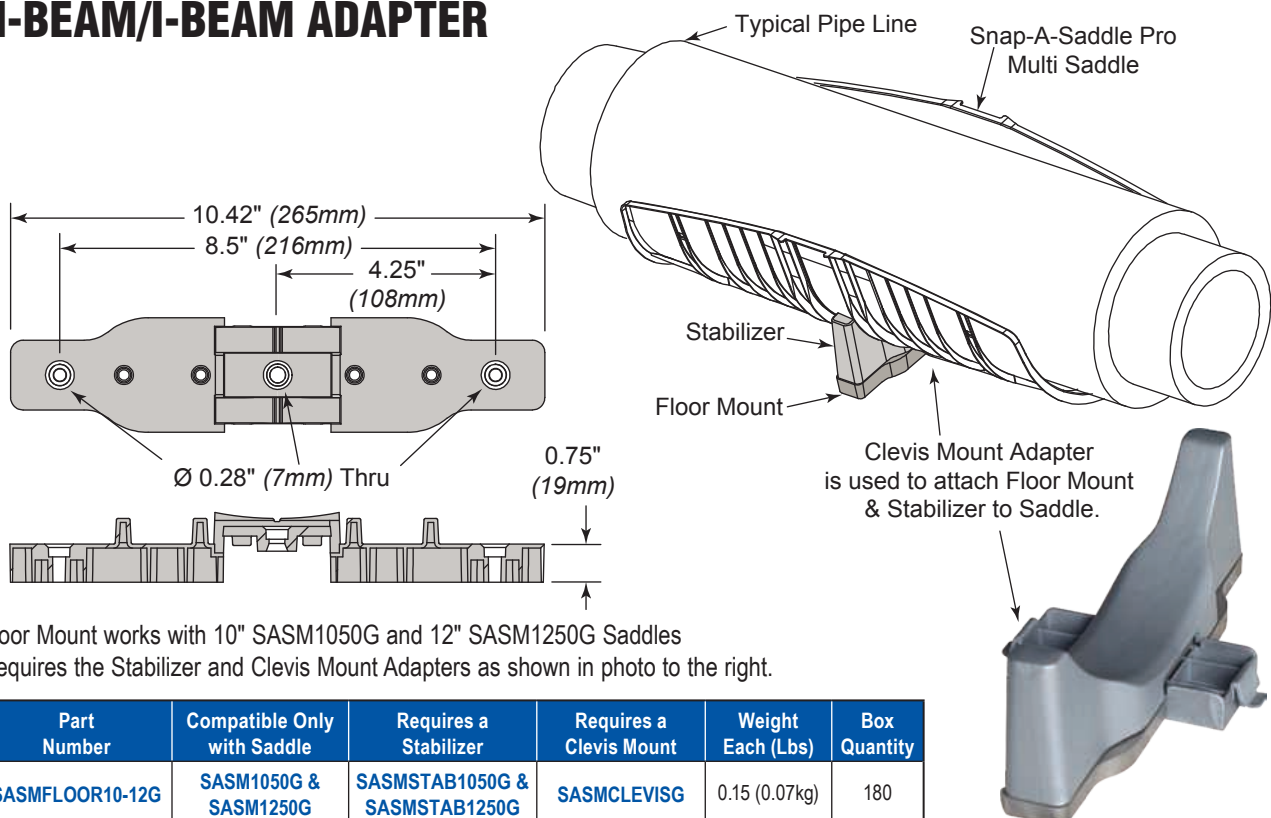
Adaptable Insulated Pipe Saddle

FLOOR ADAPTER



Part Number	B	D	E	Compatible Only with Saddle	Weight Each (Lbs)	Box Quantity
SASMSTAB1050G	10.34" (263mm)	R5.13	2.24" (57mm)	SASM1050G	0.20 (0.09kg)	72
SASMSTAB1250G	11.38" (289mm)	R6.13	2.28" (58mm)	SASM1250G	0.22 (0.10kg)	

H-BEAM/I-BEAM ADAPTER



Part Number	Compatible Only with Saddle	Requires a Stabilizer	Requires a Clevis Mount	Weight Each (Lbs)	Box Quantity
SASMLOOR10-12G	SASM1050G & SASM1250G	SASMSTAB1050G & SASMSTAB1250G	SASMCLEVISG	0.15 (0.07kg)	180



WARNING: These products can expose you to chemicals including lead, which is known to the State of California to cause cancer, and which is known to cause birth defects or other reproductive harm. For more information go to www.P65Warnings.ca.gov.



Snap-A-Cover™

Cover for Insulated Pipe Saddle



Breakthrough Innovation

Its flexible design allows it to automatically adjust to the pipe's curve. Placed on top of the pipe, it can be quickly attached with tie-wraps since both the saddle and the Snap-A-Cover™ have matching notches for easy tool free installation. Similar to the Snap-A-Saddle Pro™, its sliding lip design at both ends allows the pipes to move freely without damaging the insulation.

Tool Free And Convenient

Keeping in mind convenience of use and fast installation, the Snap-A-Cover™ was designed as a single part that will suit all sizes of saddles. A quick knife cut will make the right size of cover needed as shown below.

One Part Suits All Sizes

Simply cut to desired size

Allows The Pipe To Move

Sliding lip design at both ends

Fast Installation

Simply cut to desired size & tie-rap at both ends

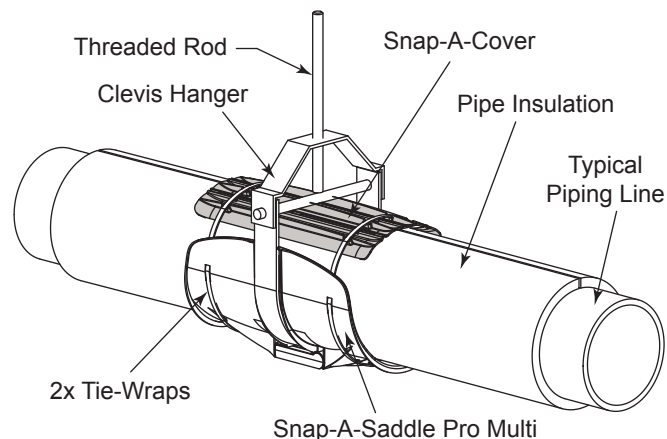


WARNING: These products can expose you to chemicals including lead, which is known to the State of California to cause cancer, and which is known to cause birth defects or other reproductive harm. For more information go to www.P65Warnings.ca.gov.

Cover for Insulated Pipe Saddle

SNAP-A-COVER

Insulated Pipe Saddle Cover



Applications:

Refrigeration, Air Conditioning and Plumbing

Installation:

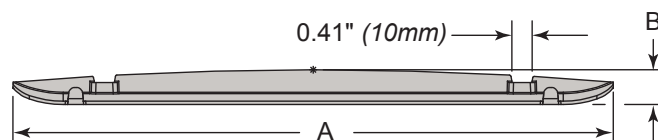
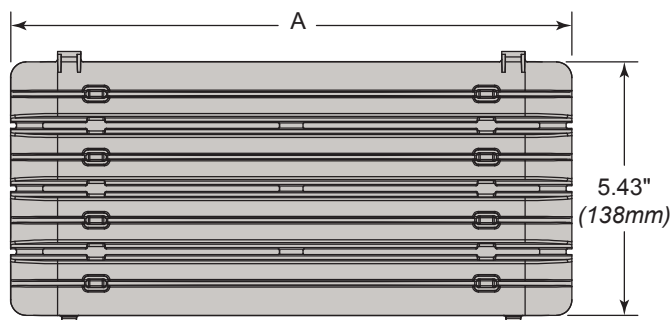
Tool-Free, Suited for horizontal pipe installation.

Certification:

UL classified for USA (UL-723 (ASTM E 84)) and ULC listed for Canada (ULC-S102.2).

Material:

- Polypropylene
- UV resistant
- Operating temperature -40° to 178°F (-40° to 81°C)
- Paintable (preserves mechanical properties even after painting)
- Non-adhesive surface for linear expansion of thermal insulation.



Part Number	Color	Use with	For Use With Part Numbers	A	B	Weight Each (Lbs)	Box Quantity
SACX25B	Black	Snap-A-Saddle Pro	SAS225B , SAS325B , SAS425B , SAS525B , SAS625B	12" (305mm)	0.83" (21mm)	0.19 (0.09kg)	170
SACX25W	White	Snap-A-Saddle Pro	SAS225W , SAS325W , SAS425W , SAS525W , SAS625W				
SAC825B	Black	Snap-A-Saddle Pro	SAS825B			0.50 (0.23kg)	70
SAC825W	White	Snap-A-Saddle Pro	SAS825W				

Part Number	Color	Use with	For Use With Part Numbers	A	B	Weight Each (Lbs)	Box Quantity
SACX50G	Grey	Snap-A-Saddle Pro Multi	SASM250G , SASM350G , SASM450G , SASM550G , SASM650G	12" (305mm)	0.83" (21mm)	0.19 (0.09kg)	170
SACL50G	Grey	Snap-A-Saddle Pro Multi	SASM850G , SASM1050G , SASM1250G	18" (457mm)	0.77" (19.5mm)	0.74 (0.33kg)	40

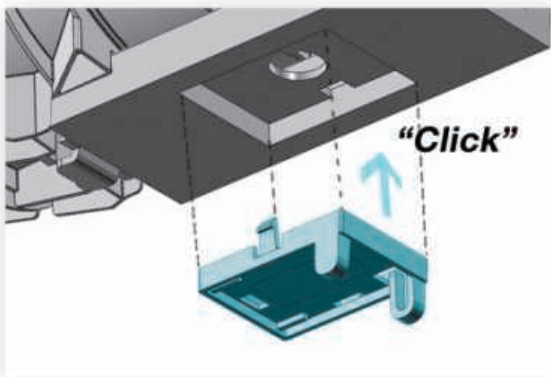


WARNING: These products can expose you to chemicals including lead, which is known to the State of California to cause cancer, and which is known to cause birth defects or other reproductive harm. For more information go to www.P65Warnings.ca.gov.

Magnetic Shock Detection Device



Water hammer problems can create extensive pipe damage. The magnetic shock detection device is a great tool to help maintenance crews detect water hammer areas BEFORE pipe damage occurs.



Interchangeable Color-Coded Flags



Each color coded flag will trigger at a different shock intensity. Flags are easily interchangeable for different shock tolerance. Flag thickness varies by shock intensity.

- 1.8G (Downward Allowable Stress Design)
- 1.6G (Downward Allowable Stress Design)
- 1.4G (Downward Allowable Stress Design)



Install Flag



Set Flag to Arm

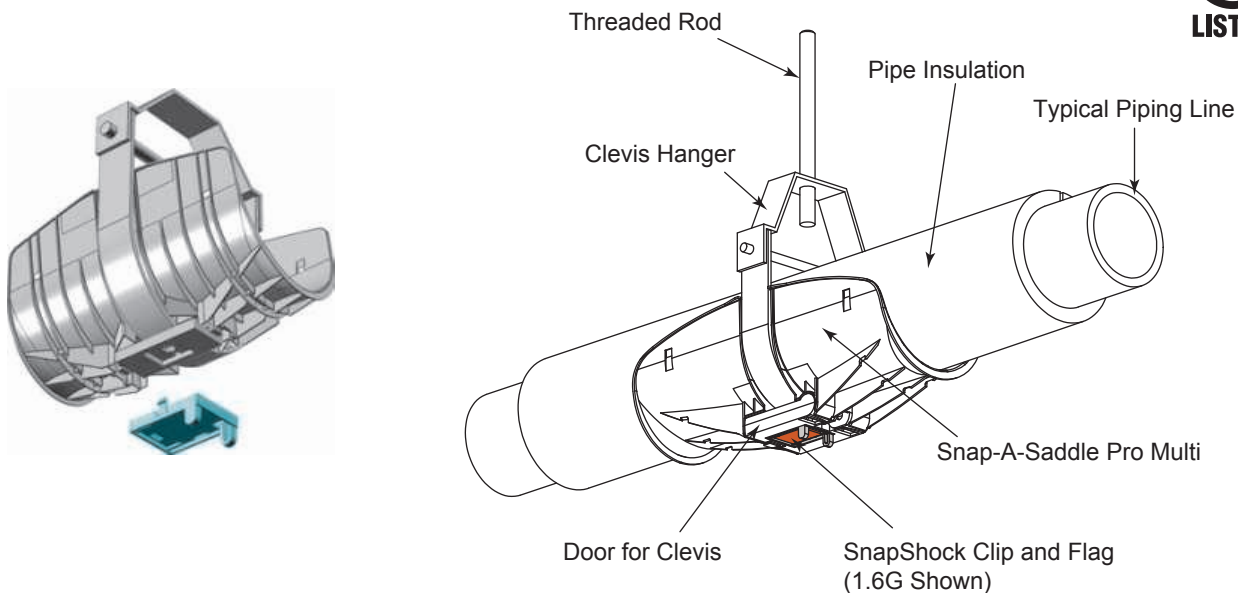


Activated Flag Indicates Shock Issue



WARNING: These products can expose you to chemicals including lead, which is known to the State of California to cause cancer, and which is known to cause birth defects or other reproductive harm. For more information go to www.P65Warnings.ca.gov.

Magnetic Shock Detection Device



Applications:

Refrigeration, Air Conditioning and Plumbing

Installation:

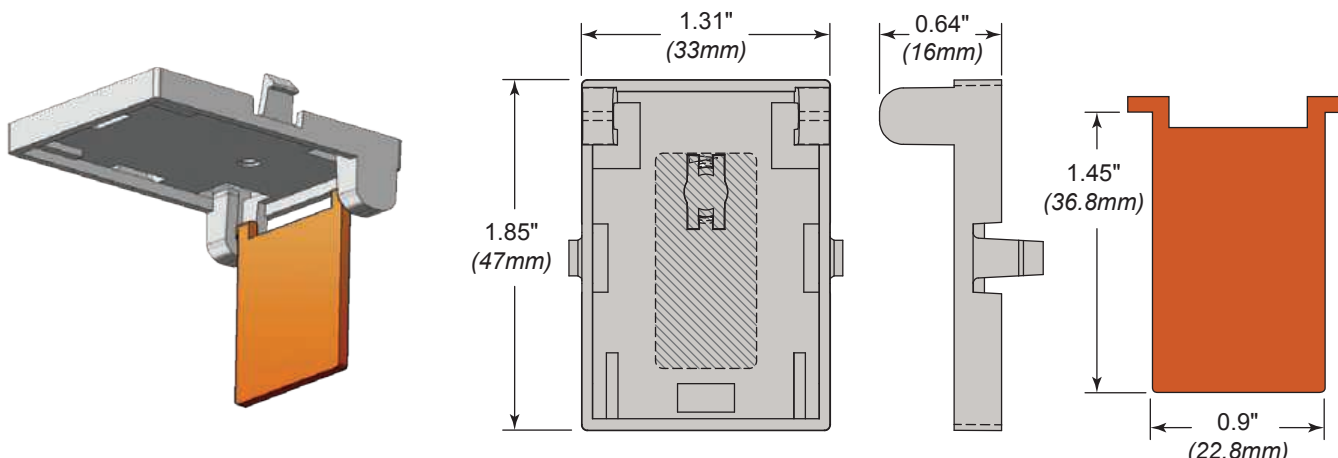
Tool-Free, clips directly into the Clevis adapter of the Snap-A-Saddle Pro Multi™

Certification:

UL classified for USA (UL-723 (ASTM E 84)) and ULC listed for Canada (ULC-S102.2).

Material:

- Polypropylene 20% glass filled
- UV resistant
- Operating temperature -40° to 178°F (-40° to 81°C)

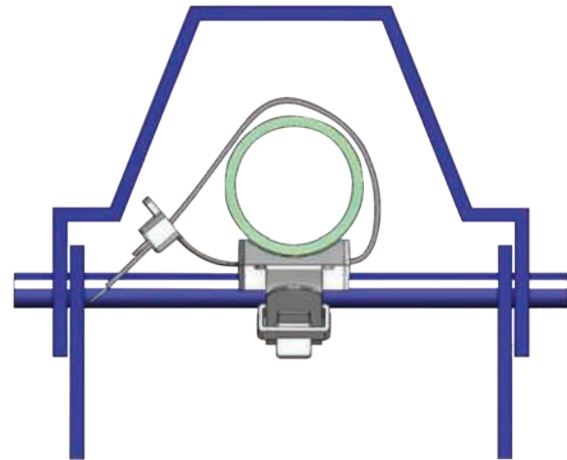


Part Number	A	B	C	D	E	Weight Each (Lbs)	Box Quantity
SNAPSHOCK	1.31" (33mm)	1.85" (47mm)	0.64" (16mm)	1.45" (36.8mm)	0.9" (22.8mm)	0.08 (0.04kg)	—
SnapShock is sold by the unit. Each unit is supplied complete with all three flags.							



WARNING: These products can expose you to chemicals including lead, which is known to the State of California to cause cancer, and which is known to cause birth defects or other reproductive harm. For more information go to www.P65Warnings.ca.gov.

Dual-Strap Fastener for Clevis Hanger Cross-Bolt



Need An Extra Line Using Existing Clevis Hangers?

The Snap-A-Clip™ was designed to fill that need! With this new inexpensive pipe fastener, you can securely fasten liquid lines (refrigeration), water pipes, electrical cables, communications cables and more within the free space available above the cross-bolt of Clevis Hangers.

Greatly Contributes To Lower Your Installation Costs

No need to install separate pipe hangers as you benefit from the free space provided by the upper area of the existing sturdy Clevis Hanger ceiling installation which can accommodate holding additional pipes or cables up to 2.25 inch (57 mm) in diameter. This clever, inexpensive fastener will save you time and money whenever your customers need to add an extra pipe run or some cabling to an existing installation.

Tool-Free Installation

1. Fix dual-strap fastener to pipe
2. Slide inside Clevis Hanger cross-bolt area
3. Strap pipe to cross-bolt
4. Tighten and secure straps

Versatile Low-Cost Solution To Hold Pipes Or Cables

Costs a fraction of conventional installations to add various types of pipes or cables to an existing Clevis Hangers installation.

Rounded Shape Of Fastener Base Will Accommodate Various Sizes Of Pipes Or Cables

Indented rounded base will securely hold pipes or cables sizes ranging from 0.25 to 2.25 inches (6.35 to 25 mm)

Time-Saving Tie-Wrap Style Fastening

Dual straps already molded within the fastener assembly, saving installation time

Maintains Clevis Functionality

Will not interfere with swinging movement of lower metal strap

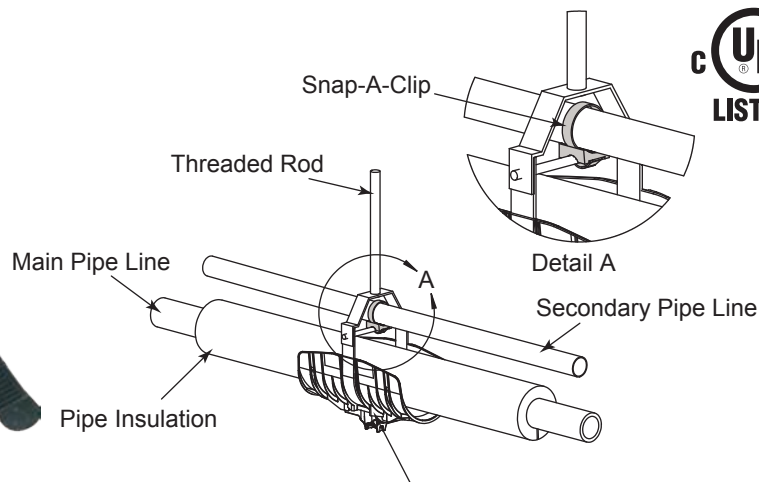
Takes No Additional Ceiling Space

Small fastener allows running pipes and cables through existing Clevis hanger's unused space



WARNING: These products can expose you to chemicals including lead, which is known to the State of California to cause cancer, and which is known to cause birth defects or other reproductive harm. For more information go to www.P65Warnings.ca.gov.

Dual-Strap Fastener for Clevis Hanger Cross-Bolt



Applications:

Refrigeration, Air Conditioning, Plumbing, Electrical and Communication

Installation:

Tool-Free, Tie-wrap style

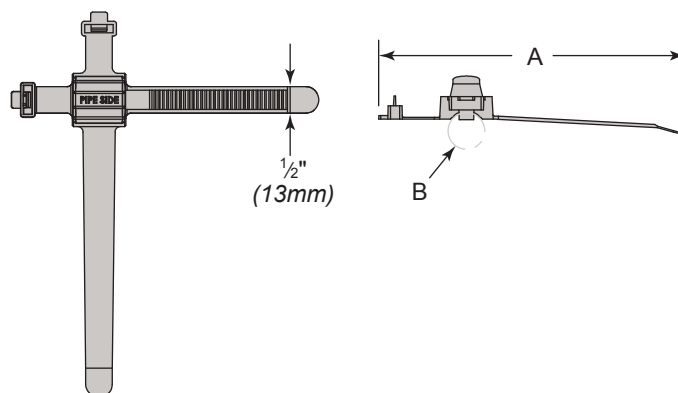
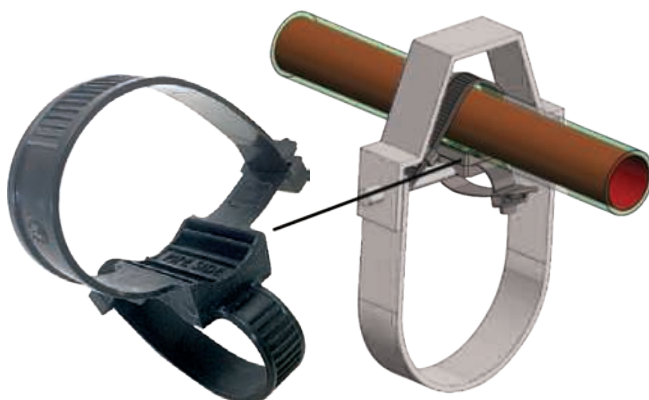
Certification:

UL classified for USA (UL-723 (ASTM E 84)) and ULC listed for Canada (ULC-S102.2).

Material:

Snap-A-Saddle Pro Multi

- Polypropylene
- UV resistant
- Operating temperature -40° to 178°F (-40° to 81°C)
- Paintable (preserves mechanical properties event after painting)



Part Number	For Pipe OD	A	B	C	Weight Each (Lbs)	Box Quantity
SASP050B	1/4" - 1/2"	1/2" (12.7mm)	5.62" (143mm)	0.68" (17mm)	0.02 (0.01kg)	550
SASP125B	5/8" - 1-1/4"		5.77" (146.5mm)	1.25" (32mm)		
SASP175B	1-5/16" - 1-3/4"		6.20" (157.5mm)	1.75" (44.5mm)		
SASP225B	1-3/4" - 2-1/4"		6.20" (157.5mm)	1.71" (43.5mm)		

Bolt Diameter	Pipe Diameter									
	1/4" (6.3mm)	1/2" (12.7mm)	5/8" (15.9mm)	3/4" (19mm)	1" (25.4mm)	1-1/4" (31.8mm)	1-1/2" (38.1mm)	1-3/4" (44.5mm)	2" (50.8mm)	2-1/4" (57.2mm)
1/4" (6.3mm)	SASP050B	SASP050B	-	-	-	-	-	-	-	-
5/16" (7.9mm)			-	-	-	-	-	-	-	-
3/8" (9.5mm)			SASP125B	SASP125B	SASP125B	SASP125B	SASP175B	-	-	-
1/2" (12.7mm)								-	-	-
11/16" (17.5mm)								SASP225B	SASP225B	SASP225B



WARNING: These products can expose you to chemicals including lead, which is known to the State of California to cause cancer, and which is known to cause birth defects or other reproductive harm. For more information go to www.P65Warnings.ca.gov.



Snap-A-Saddle Pro™

The Ideal Pipe Saddle/Shield to Protect Insulated Pipes



DISTRIBUTED BY:



UNISTRUT
SERVICE COMPANY

Unistrut Service Company
24400 Sperry Drive
Cleveland, OH 44145
(440) 348-9450

ZSi-Foster
(800) 323-7053
ZSi-Foster.com

ZSi-Foster - Canton, MI | La Mirada, CA | Ocala, FL | Springfield, MO