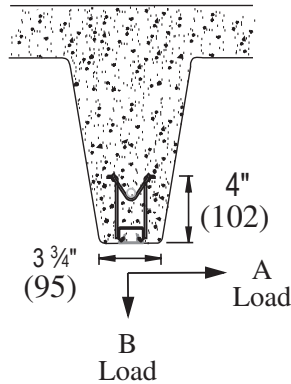
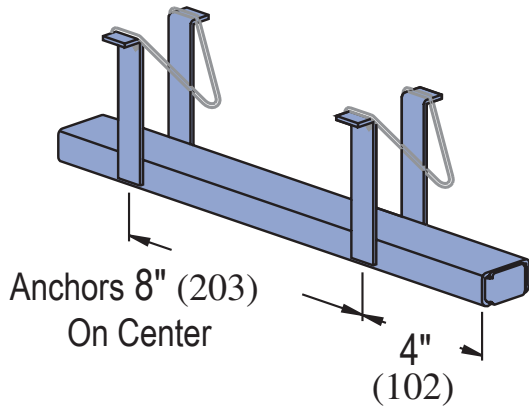




### P3165 SERIES

### 1 5/8" x 7/8" CHANNEL



Part No.	Length Ft (M)	Wt/100 pcs Lbs (kg)
P3165	10	1,650
	3.05	748.4
P3170	20	3,280
	6.10	1,487.8

Safety factor 3.

#### Maximum allowable load/ft.

Concrete	A Lbs (kN)	B Lbs (kN)
Light Wt	425	800
	1.9	3.6
Normal Wt	500	1,000
	2.2	4.5

Safety factor 3.

"X" Suffix – No Closure Strip, No End Caps

"WC" Suffix – With Closure Strip & End Caps

- Designed for use in prestressed concrete.
- Anchors 8" (203 mm) on center; first anchor 4" (102 mm) from end.
- Includes closure and end caps unless otherwise requested.
- Material: Cold formed from 12 Ga. (2.7 mm) steel conforming to ASTM A1011 SS GR 33 or ASTM A653 GR 33. A. Stainless steel available on special order.
- Finish: Choice of Perma-Green II (GR), hot-dipped galvanized (HG) conforming to ASTM A123 or A153, pre-galvanized (PG) conforming to ASTM A653-G90, or plain (PL).

### MATERIAL

Cold-formed inserts are manufactured from standard 12 gauge (2.7 mm) Unistrut channel sections conforming to ASTM A1011 SS GR 33 or ASTM A653 GR 33, unless otherwise noted.

Hot-rolled inserts, as noted, are manufactured from carbon steel meeting physical requirements of ASTM A283 GR D.

To inhibit concrete seepage, all inserts (except spot inserts) are provided with closure strips and end caps or foam filler, unless otherwise requested.

Most concrete inserts are available in stainless steel on special order. Consult factory for ordering information.

### FINISHES

Cold-formed, standard-duty, light-duty and spot concrete inserts are available in:

Perma-Green III (GR),

Hot dipped galvanized (HG), conforming to ASTM A123 or A153;

Pre-galvanized (PG), conforming to ASTM A653 GR 33

Plain (PL).

Project: \_\_\_\_\_

Approval Stamp:

Architect / Engineer: \_\_\_\_\_

Date: \_\_\_\_\_ Phone: \_\_\_\_\_

Contractor: \_\_\_\_\_

Address: \_\_\_\_\_

Notes 1: \_\_\_\_\_

Notes 2: \_\_\_\_\_