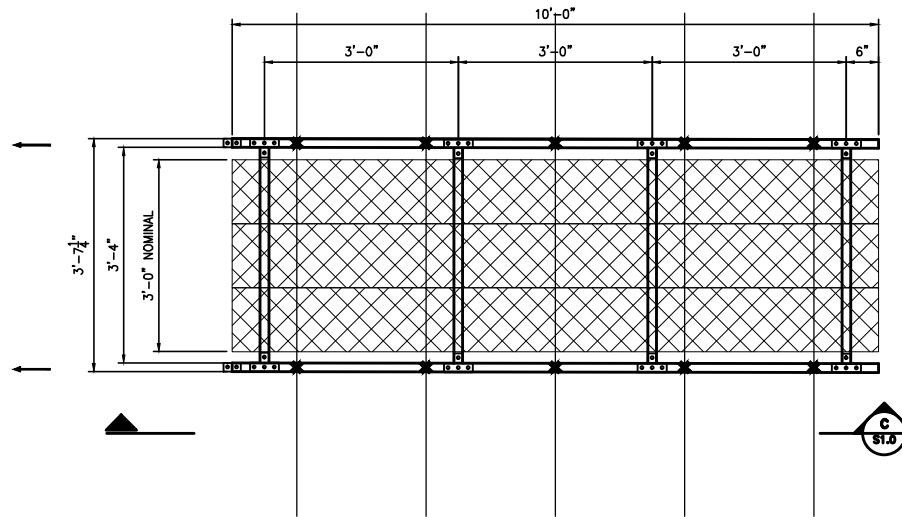
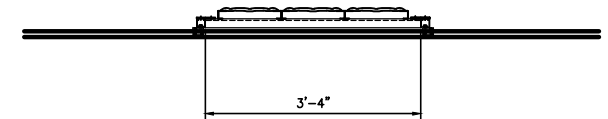


UNISTRUT PERPENDICULAR 10'-0" WALKWAY PLAN W/ NO RAILS
PART NO. GSANG-03610-S
PART NO. GSANP-03610-S
 SCALE: 3/4"=1'-0"



UNISTRUT PERPENDICULAR 10'-0" WALKWAY PLAN W/ NO RAILS
PART NO. GSANG-03610-A
PART NO. GSANP-03610-A
 SCALE: 3/4"=1'-0"




SECTION B
 SCALE: 3/4"=1'-0"

COMMON FINISHES ARE PRE-GALVANIZED (PG) AND PERMA GREEN. OTHER MATERIAL AND FINISHES ARE AVAILABLE, CONTACT UNISTRUT SERVICE COMPANY FOR MORE INFORMATION

THE STANDARD DETAIL IS FOR REFERENCE ONLY, AND IS NOT CONSIDERED TO BE AN ENGINEERED SYSTEM UNLESS PURCHASED THROUGH UNISTRUT SERVICE COMPANY 34400 SPERRY DR. WESTLAKE, OHIO 44145. STANDARD DETAILS ARE FOR DESIGN INTENT ONLY. ACTUAL CONDITIONS, INCLUDING BUT NOT LIMITED TO LOADING, BLENDING, OVERALL SIZE, SPACING, BUILDING STRUCTURE, FIELD CONDITIONS, MEP INTERFERENCES, ETC CAN AND WILL VARY. CONTACT UNISTRUT SERVICE COMPANY AT 440-348-6450, OR WWW.UNISTRUTOHIO.COM FOR A SITE SPECIFIC QUOTE.

NOT FOR CONSTRUCTION

 Unistrut Service Company 24400 Sperry Drive Cleveland, OH 44145 Phone: 440-348-9450 1-800-621-2508 Fax: 440-348-9455 E-Mail: info@UnistrutOhio.com				
CLIENT: UNISTRUT SERVICE COMPANY				
PROJECT DESCRIPTION: USC WESTLAKE, OHIO				
DRAWING TITLE: STANDARD NO RAIL ROOF WALK PLAN				
REV. NO. 0	DATE X	REV. DESCRIPTION	DESIGN BY D.TURK	DATE 3/7/2017
CHECKED BY	DATE	PROJECT NO. 7001	REV. NO. 1	REV. 0
OTHER:	DATE:	SCALE: AS NOTED		SHEET 1 OF 4